

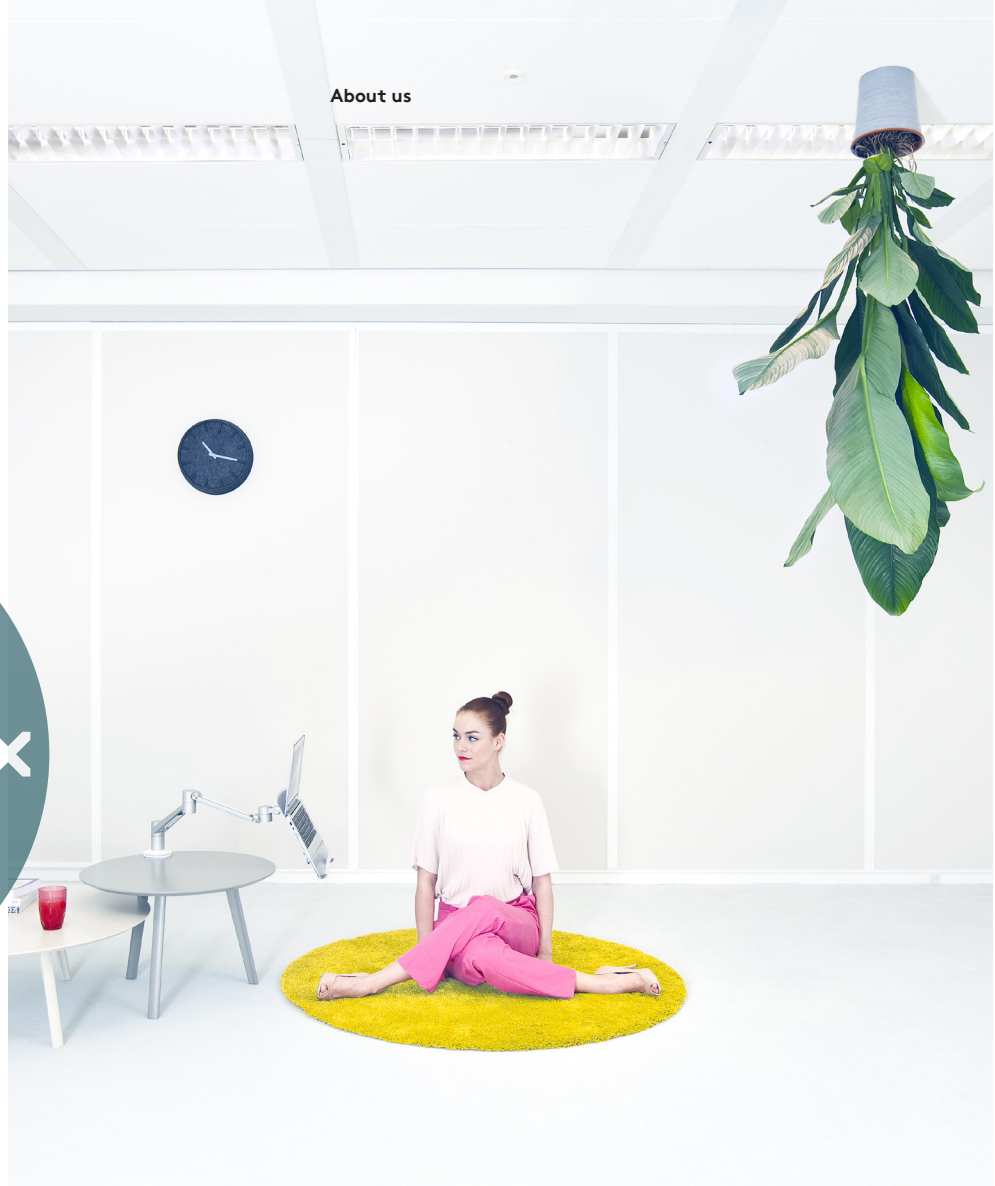
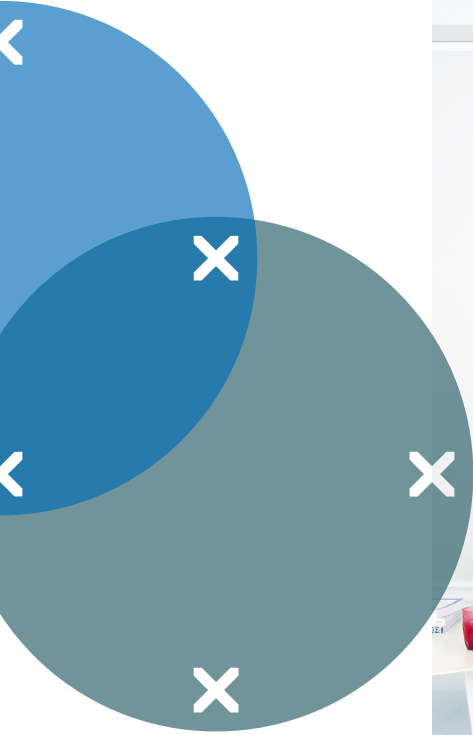
Catalogue

EN



dataflex

feeling at work



At Dataflex we want to help you get the most out of yourself. This is why we want the place where you work to be a place where you feel at home. We call it 'feeling at work'.

About us

Our product collections achieve the optimal balance between functionality, design and price. But while we help create ergonomic computer workplaces to suit every budget, we never compromise on quality.

Quality products for everyone

We design products at the intersection of ergonomics, technology and workplaces. We call them ergonomic computer workplace accessories. Products for every day, every budget and everyone. From freelancers to multinationals, from factories to banks. Backed up by friendly advice, service and support. And because we never compromise on quality, we've won international recognition for both our technical standards and our design flair.

All with one thing in mind: to help you create the comfortable, healthy and inspiring workplace that's right for your needs.

Please visit our website for more information:

www.dataflex-int.com

Table of contents

Viewprime

Monitor arms 6

Viewlite

Monitor arms 10

Toolbars 14

Computer holders 16

Viewmate

Monitor arms 18

Toolbars 24

Workstations 26

Computer holders 28

Viewgo

Monitor arms 30

Computer holders 32

Addit

Laptop risers 34

Monitor risers 36

Document holders 38

Posture supports 39

Monitor stands 39

AV solutions 40

Hardware security 41

Cable management 42

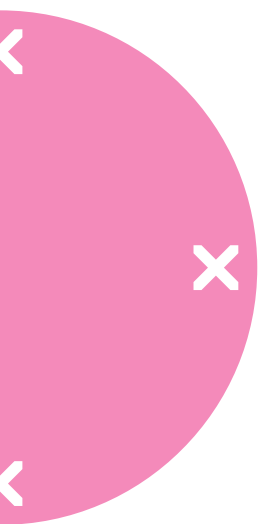
Our prices 47

All prices are subject to our general terms and conditions of sale.

Copyright 2022 © Dataflex International BV
Krimpen a/d IJssel, Netherlands

Solutions that work for **you**

Dataflex products help you create a workplace that's comfortable, healthy and inspiring.



A partner with experience

After more than 30 years specialising in this line of work, we're today recognised as much for our technical standards as our design flair. We hold a coveted ISO quality assurance certificate for our product development, production, assembly, sales and supply processes, as well as several design honours including the prestigious Red Dot and IF awards.

Our offer

People in every kind of business setting swear by our solutions. We've carefully arranged our wide offering in such a way that you can quickly find the solution that's just right for you.

Check out our website for all tools and possibilities.

www.dataflex-int.com



viewprime^x

Superior usability through engineering finesse



Refined adjustability
Unparalleled agility
Elegant design



viewlite^x

Designed for tomorrow's change



World class design
Futureproof
Sustainable



viewmate^x

No-nonsense in every setting



Hassle-free
Cost effective
Durable



viewgo^x

Playful looks, serious value



Different
Smart
Simple



addit^x

So good you forget it's there



Finest materials
Refined stability
Complete reliability

viewprime^x



Monitor arms

Viewprime monitor arms have exceptionally wide depth and height adjustability, and can even be set flush to a wall or partition. It moves your monitor smoothly and precisely at a finger's touch, but once in place remains rock-steady. The high-quality gas spring and precision-engineered joints make the Viewprime not just a joy to look at, but a joy to use. Ideal for hot desk workspaces, and with a minimal footprint, the Viewprime is a best-in-class full-feature monitor arm that comes in a timeless, award-winning design. Experience tomorrow's monitor arm today.

Monitor arms



Mounting

The following products do not include desk mounts. These desk mounts can be found a bit further into this catalogue.



Viewprime plus monitor arm - desk 11

- Dynamic independent height adjustment
- Independent depth adjustment
- Height adjustment by gas spring
- Max. 9 kg (9,8 lb.) per monitor

65.110 white

65.113 black



Viewprime plus monitor arm - desk 21

- Dynamic independent height adjustment
- Independent depth adjustment
- Height adjustment by gas spring
- Max. 8,5 kg (18,7lb.) per monitor

65.210 white

65.213 black



Viewprime bolt through desk - mount 81

- Attaches to arm
- Suitable for 10 - 80 mm (0,4" - 3,2") diameter holes

65.810 white

65.813 black



Viewprime desk clamp S - mount 93

- Attaches to arm
- Suitable for desktops thicknesses of 18 - 25 mm (0,7" - 1,0")

65.930 white

65.933 black



Viewprime desk clamp - mount 91

- Attaches to arm
- Suitable for desktop thicknesses of 12 - 50 mm (0,5" - 2,0")

65.910 white

65.913 black

viewprime^x



Viewprime desk clamp - mount 92

- Attaches to arm
- Suitable for desktop thicknesses of 12 - 50 mm (0,5" - 2,0")

65.920 white
65.923 black



Viewprime bolt through desk - mount 82

- Attaches to arm
- Suitable for 10 - 80 mm (0,4" - 3,2") diameter holes

65.820 white
65.823 black



Viewprime desk clamp S - mount 94

- Attaches to arm
- Suitable for desktops thicknesses of 18 - 25 mm (0,7" - 1,0")

65.940 white
65.943 black

Monitor arms



viewlite



Monitor arms

Behind the elegant, minimalist look & feel lies a sophisticated design that combines superb ergonomics with strength, durability, attention to detail and excellent green credentials. With its wide variety of interchangeable parts, the lightweight modular system gives every organisation the flexibility to tailor the ideal solution for their needs, which contributes to a healthier, happier, more productive workplace. You can also go on reconfiguring the system to meet the changing IT or layout needs of your office and evolving requirements of your business. These monitor arms are 100% recyclable and 40% of the aluminium we use has already been recycled when we get it. So you're doing your bit for the environment, too.

Monitor arms



Why buy in bulk?

- Lower product cost
- More mounting options
- Quicker installation
- Less packaging material

Want to know more about buying in bulk? Please feel free to contact us!



Viewlite monitor arm - desk 10

- Static height adjustment
- Fixed depth
- Height adjustment by tool
- Max. 8 kg (17,6 lb) per monitor

58.100 white
58.102 silver
58.103 black



Viewlite monitor arm - desk 12

- Static height adjustment
- Independent depth adjustment
- Height adjustment by tool
- Max. 8 kg (17,6 lb) per monitor

58.120 white
58.122 silver
58.123 black



Viewlite plus monitor arm - desk 62

- Dynamic independent height adjustment
- Independent depth adjustment
- Height adjustment by one-way bearing
- Max. 7 kg (15,4 lb) per monitor

58.620 white
58.622 silver
58.623 black



Viewlite monitor arm - desk 14

- Independent height adjustment
- Independent depth adjustment
- Height adjustment by tool
- Max. 8 kg (17,6 lb) per monitor

58.140 white
58.142 silver
58.143 black



Viewlite plus monitor arm - desk 65

- Dynamic independent height adjustment
- Independent depth adjustment
- Height adjustment by one way bearing
- Max. 7 kg (15,4 lb) per monitor

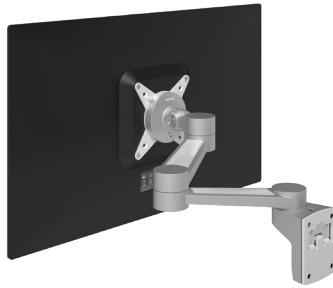
58.650 white
58.652 silver
58.653 black

viewlite^x

Viewlite monitor arm - wall 20

- Fixed height
- Fixed depth
- Max. 8 kg (17,6 lb) per monitor

58.202 silver



Viewlite monitor arm - wall 22

- Fixed height
- Independent depth adjustment
- Max. 8 kg (17,6 lb) per monitor

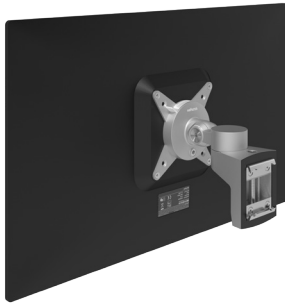
58.222 silver



Viewlite plus monitor arm - wall 31

- Dynamic height adjustment
- Dependent depth adjustment
- Height adjustment by one-way bearing
- Max. 7 kg (15,4 lb) per monitor

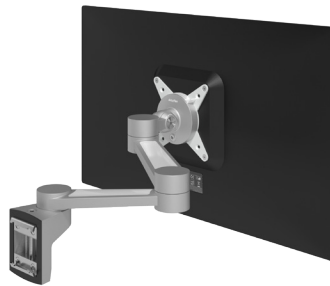
58.312 silver



Viewlite monitor arm - rail 40

- Fixed height
- Fixed depth
- Max. 8 kg (17,6 lb) per monitor

58.402 silver



Viewlite monitor arm - rail 42

- Fixed height
- Independent depth adjustment
- Max. 8 kg (17,6 lb) per monitor

58.422 silver



Viewlite plus monitor arm - rail 51

- Dynamic height adjustment
- Dependent depth adjustment
- Height adjustment by one-way bearing
- Max. 7 kg (15,4 lb) per monitor

58.512 silver

Monitor arms



Viewlite VESA 200 x 100 mount - option 02

- Mount for VESA 200 x 100 mm
- Connects to Viewlite quick-release

58.020 white



Viewlite universal tablet holder - option 05

- Adjustable fit
- Connects to Viewlite quick-release

58.050 white

58.053 black



Viewlite laptop holder - option 04

- Platform for notebooks or laptops
- Integrated cable management
- Connects to Viewlite quick-release

58.040 white

58.043 black



Viewlite dual monitor arm upgrade kit - option 60

- Expansion set for second monitor arm
- Dynamic height adjustment
- Mounts to base

58.600 white

58.602 silver

58.603 black

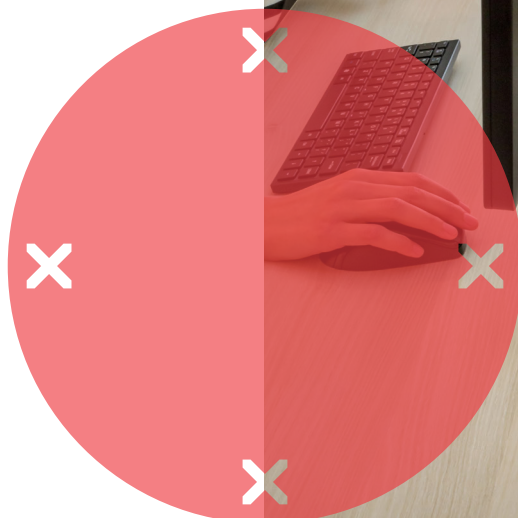


Viewlite desk plate - option 01

- Freely movable
- Weighted plate for added stability
- Mounts to pole

58.010 white

viewlite



Toolbars

A mix of practicality, great design and sound ergonomics. With integrated cable management and made from the same 40% recycled aluminium we use in all Viewlite products. These space-saving toolbars not only elegantly delineate between workplaces and support cleandesk policies, they also let you personalise and organise your workspace, and keep it clutter-free.

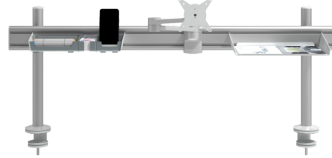
Toolbars



Why buy in bulk?

- Lower product cost
- More mounting options
- Quicker installation
- Less packaging material

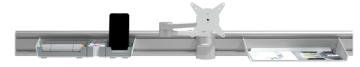
Want to know more about buying in bulk? Please feel free to contact us!



Viewlite toolbar - desk 70

- 3rd level creates desk space
- Toolbar width 1200 mm (47,2")
- Suitable for max. 3 accessories

58.702 silver



Viewlite toolbar - wall 71

- 3rd level creates desk space
- Toolbar width 1200 mm (47,2")
- Suitable for max. 3 accessories

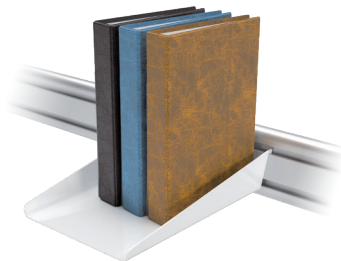
58.712 silver



Viewlite utensil tray - option 75

- Practical storage space
- Freely movable
- Mounts to toolbar

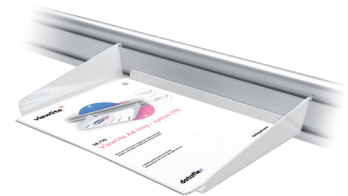
58.750 white



Viewlite binder tray - option 76

- Holds up to 3 binders
- Freely movable
- Mounts to toolbar

58.760 white



Viewlite A4 tray - option 77

- Shaped to hold A4 sized documents
- Freely movable
- Mounts to toolbar

58.770 white

viewlite^x



Computer holders

Hold your PC in a grip that never loosens. Viewlite computer holders are tough, elegant and versatile. Suspended under your desktop from a choice of low or high mounting brackets, the holder is easy to mount vertically or horizontally under nearly any desktop surface, whatever your support beam system. Adjustable sliding parts mean it neatly encases a computer of any size. 100% recyclable and designed for disassembly.

Computer holders

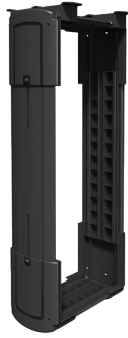


Viewlite computer holder - desk 10

- Suitable for small computers
- Supports horizontal or vertical placement
- Mounts underneath desktop

35.100 white

35.103 black



Viewlite computer holder - desk 20

- Suitable for large computers
- Supports horizontal or vertical placement
- Mounts underneath desktop

35.200 white

35.203 black

viewmate^x



Monitor arms

They may be robust, durable and pragmatic, but with their stylish finish Viewmate monitor arms look great, too. That gives you superb value-for-money. Made from heavy-duty steel, and both upgradable and configurable, these monitor arms will last and last. Easy to install and adjust, they're also good news ergonomically. Most models are shipped with desk clamp, bolt-through desk, base plate, ceiling or wall mount.

Monitor arms



Why buy in bulk?

- Lower product cost
- More mounting options
- Quicker installation
- Less packaging material

Want to know more about buying in bulk? Please feel free to contact us!



Viewmate monitor arm - desk 65

- Static height adjustment
- Fixed depth
- Height adjustment by clamp lever
- Max. 15 kg (33 lb) per monitor

52.652 silver



Viewmate monitor arm - desk 66

- Static height adjustment
- Independent depth adjustment
- Height adjustment by clamp lever
- Max. 15 kg (33 lb) per monitor

52.662 silver



Viewmate plus monitor arm - desk 83

- Dynamic independent height adjustment
- Independent depth adjustment
- Height adjustment by extension spring
- 2 - 8 kg (4,4 - 17,6 lb) per monitor

52.832 silver



Viewmate plus monitor arm - desk 85

- Horizontal positioning of the monitor
- Independent depth adjustment
- Easy extendable for multiple monitors
- Max. 8 kg (17,6 lb) per monitor

52.852 silver



Viewmate plus monitor arm - desk 86

- Horizontal positioning of the monitor
- Independent depth adjustment
- Suitable for two monitors/devices
- Max. 8 kg (17,6 lb) per monitor

52.862 silver

viewmate^x



Viewmate monitor arm - desk 64

- Static height adjustment
- Fixed depth
- Height adjustment by clamp lever
- Max. 15 kg (33 lb) per monitor

52.642 silver

52.643 black



Viewmate monitor arm - desk 60

- Static height adjustment
- Independent depth adjustment
- Depth adjustment by handle bar
- Max. 7,5 kg (16,5 lb) per monitor

52.602 silver

52.603 black



Viewmate monitor arm - desk 63

- Static height adjustment
- Independent depth adjustment
- Height adjustment by clamp lever
- Max. 15 kg (33 lb) per monitor

52.632 silver



Viewmate monitor arm - desk 67

- Static height adjustment
- Fixed depth
- Height adjustment by clamp lever
- Max. 15 kg (33 lb) per monitor

52.672 silver



Viewmate monitor arm - desk 68

- Static height adjustment
- Independent depth adjustment
- Height adjustment by clamp lever
- Max. 15 kg (33 lb) per monitor

52.682 silver



Viewmate monitor arm - desk 62

- Static height adjustment
- Independent depth adjustment
- Height adjustment by clamp lever
- Max. 12 kg (26,5 lb) per monitor

52.622 silver

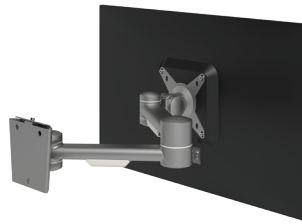
Monitor arms



Viewmate monitor arm - wall 03

- Fixed height
- Fixed depth
- Max. 15 kg (33 lb) per monitor

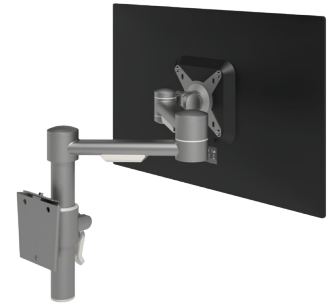
52.032 silver



Viewmate monitor arm - wall 04

- Fixed height
- Independent depth adjustment
- Max. 15 kg (33 lb) per monitor

52.042 silver



Viewmate monitor arm - wall 05

- Static height adjustment
- Independent depth adjustment
- Height adjustment by clamp lever
- Max. 15 kg (33 lb) per monitor

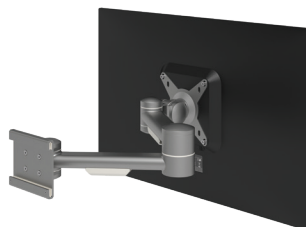
52.052 silver



Viewmate monitor arm - toolbar 13

- Fixed height
- Fixed depth
- Exclusively for Viewmate toolbar
- Max. 15 kg (33 lb) per monitor

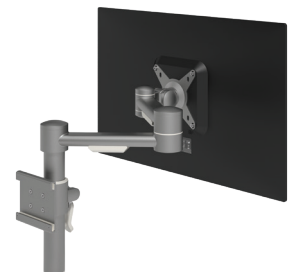
52.132 silver



Viewmate monitor arm - toolbar 14

- Fixed height
- Independent depth adjustment
- Exclusively for Viewmate toolbar
- Max. 15 kg (33 lb) per monitor

52.142 silver



Viewmate monitor arm - toolbar 15

- Static height adjustment
- Independent depth adjustment
- Exclusively for Viewmate toolbar
- Max. 15 kg (33 lb) per monitor

52.152 silver

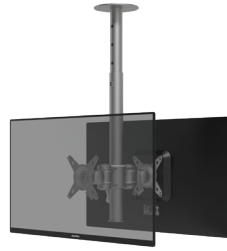
viewmate^x



Viewmate monitor arm - ceiling 56

- Static height adjustment
- Fixed depth
- Ceiling mount for 1 monitor
- Max. 15 kg (33 lb) per monitor

52.562 silver



Viewmate monitor arm - ceiling 57

- Static height adjustment
- Fixed depth
- Ceiling mount for 2 monitors
- Max. 15 kg (33 lb) per monitor

52.572 silver



Viewmate quick release mount – option 99

- For quickly (un)mounting monitors
- Attaches to VESA mount

52.990 white
52.993 black



Viewmate universal tablet holder - option 96

- Adjustable fit
- Mounts to VESA plate

52.962 silver



Viewmate laptop holder - option 97

- Platform for notebooks or laptops
- Mounts to VESA plate
- Width adjustment

52.972 silver

Monitor arms



Viewmate keyboard holder - option 59

- Holder for keyboard
- Mounts to VESA plate
- Assists a clean desk policy

51.592 silver



Viewmate keyboard & mouse platform - option 58

- Platform for mouse and keyboard
- Mounts to VESA plate
- Assists a clean desk policy

51.582 silver



Viewmate security upgrade kit - option 98

- Theft retardant
- Mounts to pole

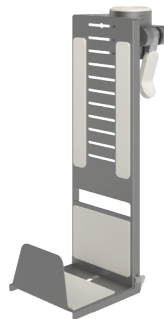
52.982 silver



Viewmate thin client holder - option 42

- Holder for thin client or USFF
- Mounts to pole
- Height adjustment by clamp lever

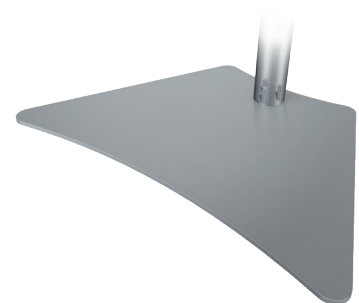
52.422 silver



Viewmate SFF holder - option 43

- Holder for small form factor computer
- Mounts to pole
- Height adjustment by clamp lever

52.432 silver

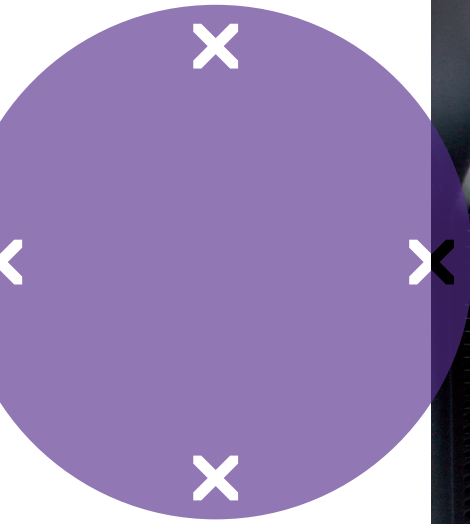


Viewmate desk plate - option 91

- Freely movable
- Weighted plate for added stability
- Mounts to pole

52.912 silver

viewmate^x



Toolbars

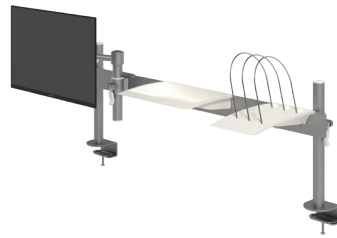
A sturdy, cost-effective yet stylish solution for a tidy workspace that's also adjustable, so it meets your ergonomic requirements, too. Providing a reliable, no-nonsense answer to even the roughest working environment.



Why buy in bulk?

- Lower product cost
- More mounting options
- Quicker installation
- Less packaging material

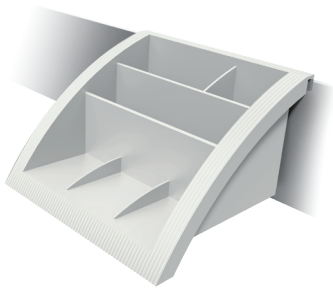
Want to know more about buying in bulk? Please feel free to contact us!



Viewmate toolbar - desk 11

- 3rd level creates desk space
- Toolbar width 1200 mm (47,2")
- Suitable for max. 3 accessories

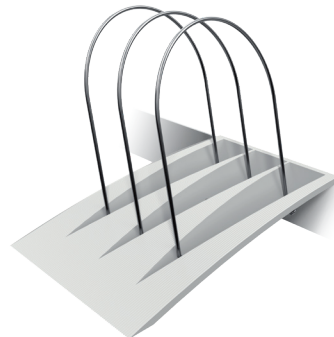
52.112 silver



Viewmate utensil tray - option 17

- Practical storage space
- Freely movable
- Mounts to toolbar

52.170 white



Viewmate binder tray - option 18

- Holds up to 3 binders
- Freely movable
- Mounts to toolbar

52.180 white

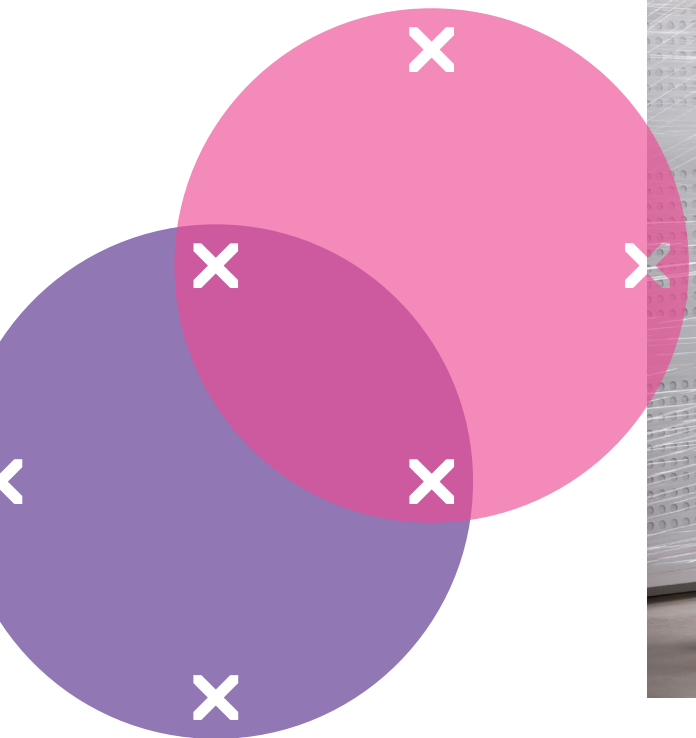


Viewmate A4 tray - option 19

- Designed to hold A4-sized documents
- Freely movable
- Mounts to toolbar

52.190 white

viewmate^x



Workstations

The ideal way to optimise space efficiency and mobility within your office. With their robust heavy-duty steel construction, Viewmate workstations can withstand the knocks they'll inevitably get during a long working life. They're also easy to install and adjust, and exceptionally good value-for-money. A modern solution for a modern office or industrial environment.

Workstations



Viewmate workstation - floor 70

- Mobile workstation
- Holds a monitor, a mouse/keyboard and a computer

52.702 silver



Viewmate workstation - floor 71

- Presentation trolley
- Holds both a display and a laptop/tablet

52.712 silver



Viewmate workstation - floor 72

- Conference trolley
- Holds multiple monitors, camera and set-top box

52.722 silver

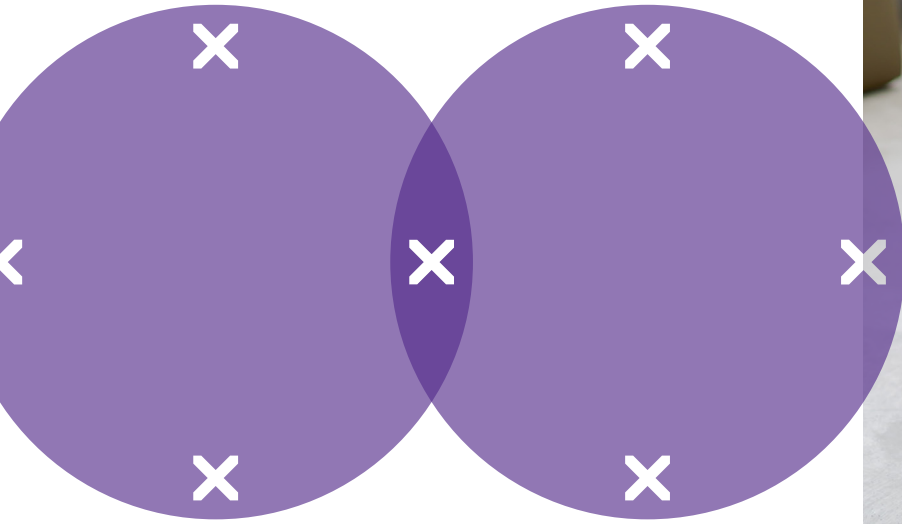


Viewmate workstation - wall 73

- Wall-mounted workstation
- Holds a monitor, a mouse/keyboard and a computer

52.732 silver

viewmate^x



Computer holders

A sturdy, dependable solution that suspends under your desktop to significantly reduce the chances of damage to your hardware from dust, spillages, accidental knocks and kicks. They have a high adjustment range, making them suitable for multiple form factors. All Viewmate computer holders are also theft-retardant, and the lockable security models completely anti-theft. This is a cost-effective solution that could save you more than just money.

Computer holders



Viewmate computer holder - desk 36

- For thin clients
- Supports horizontal or vertical placement
- Fixed desktop or wall mount

32.362 silver



Viewmate computer holder - desk 31

- Suitable for small and large computers
- Only supports vertical placement
- Fixed desktop mount

32.310 white
32.312 silver
32.313 black



Viewmate computer holder - desk 32

- Suitable for small and large computers
- Only supports vertical placement
- Retractable desktop mount

32.322 silver
32.323 black



Viewmate computer holder - desk 30

- Suitable for small and large computers
- Only supports vertical placement
- Lockable

32.302 silver
32.303 black



Viewmate master key - option 30

- Master key
- For lockable computer holders

32.309 red



Monitor arms

Comfort and space. Two things these great looking Viewgo monitor arms give you big time. Freeing up valuable room on your desktop and letting you position your monitor the way you know you can work most effectively. Slender yet strong, these monitor arms all have that winning Viewgo formula: playful design, tough steel construction. High quality, value-for-money solutions that leave you sitting pretty in more ways than one.

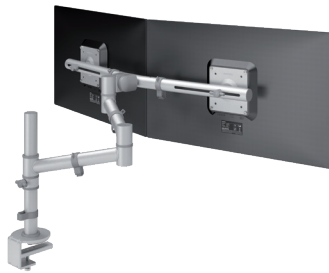
Monitor arms



Viewgo monitor arm - desk 12

- Static height adjustment
- Independent depth adjustment
- Height adjustment by threaded knob
- Max. 8 kg (17,6 lb) per monitor

48.120 white
48.122 silver
48.123 black



Viewgo monitor arm - desk 13

- Static height adjustment
- Independent depth adjustment
- Height adjustment by threaded knob
- Max. 4 kg (8,8 lb) per monitor

48.130 white
48.132 silver
48.133 black

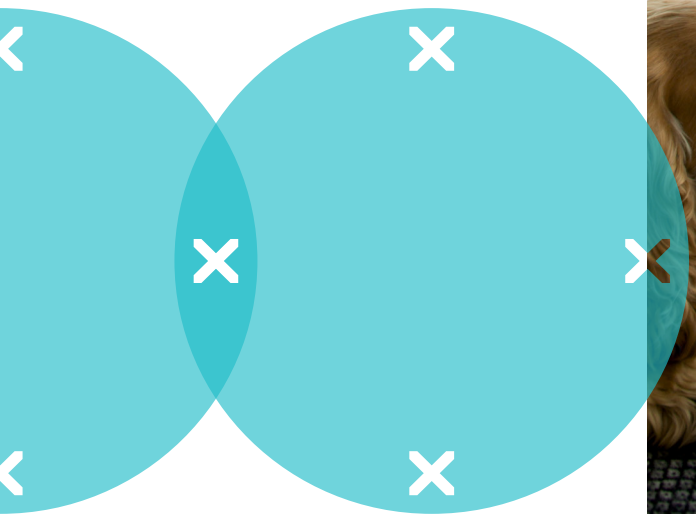


Viewgo dual monitor handle - option 00

- Mounts to crossbar
- Eases dual monitor adjustment

48.004 grey

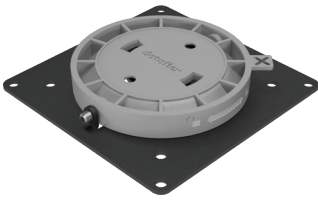
viewgo^x



Computer holders

An affordable, dependable computer holder that suspends or sits under your desktop. Making it far less likely any harm will come to your precious computer from dust, spillages, accidental kicks, knocks when cleaning and so on. In other words, this cost-effective solution might well save you much more than just money.

Computer holders



Viewgo thin client holder - desk 90

- For thin clients
- Fixed desktop or wall mount
- Lockable

48.903 black



Viewgo computer holder - desk 18

- Suitable for small and large computers
- Supports horizontal or vertical placement
- Mounts underneath desktop

32.182 silver

32.183 black



Viewgo computer holder - floor 20

- Suitable for small and large computers
- Supports angled and vertical placement
- Mobile

32.202 silver

32.203 black

addit



Addit

You can combine Addit products with any of our other collections to make a good workplace work even better. They tidy away any clutter and let you tailor your workstation to your needs - so you can focus on your job. Simple yet effective solutions designed to complement our entire product portfolio and blend in perfectly with any working environment. Products so good you forget they're there.

Laptop risers



Notebook risers

By raising your notebook to eye level, Addit notebook risers facilitate a far better working posture. You can sit more comfortably and don't have to bend forward awkwardly while reading or typing.

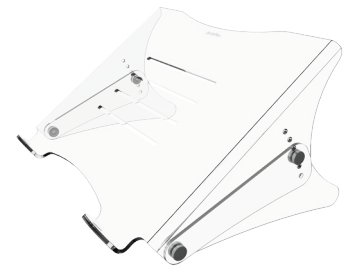


Addit Bento® ergonomic toolbox 90

- Personal storage box
- Laptop holder, tablet holder and document holder in one

45.900 white

45.903 black



Addit laptop riser - adjustable 45

- Height adjustment range 134 - 204 mm (5,3" - 8,0")
- Raises a laptop to eye level

49.450 clear acrylic



Addit laptop riser - adjustable 38

- Foldable
- Height adjustment range 151 - 211 mm (5,9" - 8,3")
- Raises a laptop to eye level

51.388 silver

addit^x

Monitor risers

Addit monitor risers lift your monitor to the appropriate eye level. We've also pioneered the use of acrylic, which isn't only strong. Being transparent, it's also aesthetically appealing and appears to take up less desk space.



Addit Bento® monitor riser 11

- Fixed height 110 mm (4,3")
- Max weight capacity 20 kg (44,1 lb)

45.110 white

45.113 black



Addit Bento® monitor riser - adjustable 12

- 3 height settings
- Max. weight capacity 20 kg (44,1 lb)

45.120 white

45.123 black



Addit Bento® ergonomic desk set 22

- The full Bento® package
- Height adjustable monitor riser + ergonomic toolbox

45.220 white

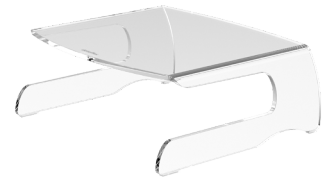
45.223 black



Addit monitor riser 90

- Fixed height 100 mm (3,9")
- Max. weight capacity 30 kg (66,1 lb)

44.900 clear acrylic



Addit monitor riser 55

- Fixed height 110 mm (4,3")
- Max. weight capacity 15 kg (33 lb)

44.550 clear acrylic

Monitor risers



Addit monitor riser 10

- Fixed height 150 mm (5,9")
- Max. weight capacity 40 kg (88,2 lb)

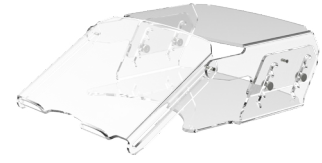
44.100 clear acrylic



Addit monitor riser - adjustable 55

- 5 height settings
- Max. weight capacity 15 kg (33 lb)

49.550 clear acrylic



Addit monitor riser - adjustable 57

- Includes document holder
- 5 height settings
- Max. weight capacity 15 kg (33 lb)

49.570 clear acrylic



Addit monitor riser 66

- Stores the laptop underneath the monitor
- Fixed height 150 mm (5,9")
- Max. weight capacity 15 kg (33 lb)

44.660 clear acrylic

addit^x

Document holders

Addit document holders aren't just convenient. They help you maintain a good posture, which can have major ergonomic benefits too.

Addit document holder - adjustable 40

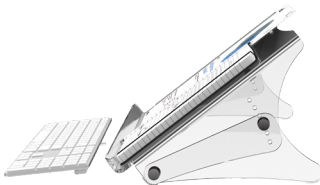
- Suitable for both A4 and A3 documents
- Height, depth and angle adjustment
- Includes magnetic bookmark

97.402 silver

Addit ErgoDoc® document holder 41

- Holds A4 and A3 documents
- Fixed height
- Slides over keyboard

44.410 clear acrylic

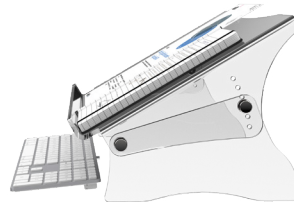


Addit ErgoDoc® document holder - adjustable 40

- Suitable for both A4 and A3 documents
- 6 height and angle settings
- Lifts over keyboard

49.400 clear acrylic

49.401 matt acrylic



Addit ErgoDoc® document holder - adjustable 41

- Suitable for both A4 and A3 documents
- 6 height and angle settings
- Slides over keyboard

49.410 clear acrylic

49.411 matt acrylic

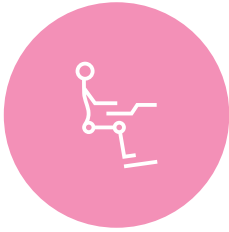


Addit ErgoDoc® document holder - adjustable 44

- Suitable for documents up to A3 size
- 6 height and angle settings
- Slides over keyboard
- Flat edge for easy writing

49.440 clear acrylic

Monitor stands



Posture supports

Obviously a fast computer, good desk and comfortable chair are important. But to turn an OK workplace into your ideal working environment, you need to get the details right. Addit posture support accessories are particularly beneficial to you if you spend hours behind your desk.



Addit keyboard & mouse drawer 22

- Fixed height
- Retractable desktop mount
- For mouse and keyboard

97.223 black



Addit footrest - adjustable 51

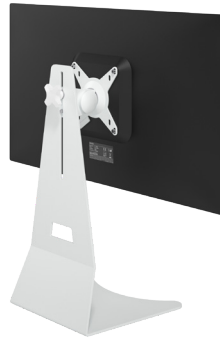
- Height adjustment range 79 - 111 mm (3,1" - 4,4")
- 4 height and angle settings
- Non-slip surface provides grip

96.513 black



Monitor stands

An easy and affordable way to get more out of your monitor. Replace your short factory stand with one that can be set to suit the needs of anyone in your office, from the tallest to the shortest.



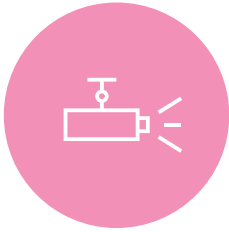
Addit monitor stand 50

- Monitor stand
- Height adjustment by threaded knob
- Max. weight capacity 15 kg (33 lb)

52.500 white

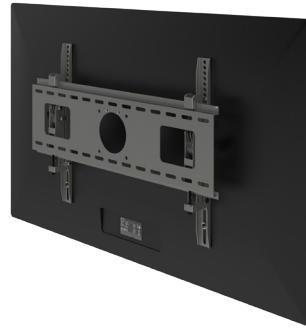
52.502 silver

52.503 black

addit^x

AV solutions

Few modern offices can do without TVs or beamers. But they occupy a lot of space and are highly vulnerable to theft. Addit AV solutions will often support your equipment out of sight, and let you secure it with ceiling or wall mounts.



Addit display mount 35

- For medium-sized displays
- Max. VESA size 600 x 400 mm
- Max. weight capacity 78 kg (172 lb)

54.352 silver



Addit display mount 36

- For large displays
- Max. VESA size 800 x 600 mm
- Max. weight capacity 90 kg (198,4 lb)

54.362 silver



Addit beamer mount 58

- Rotates, tilts and swivels
- Height adjustment range of 670 mm (26,4")
- Max. weight capacity 15 kg (33 lb)

52.582 silver



Addit quick-release mount - option 093

- Suitable for any monitor arm with VESA MIS-D 75 x 75/100 x 100 mm
- Enables fast and easy (un)mounting of monitors
- Monitor rotation lock can be enabled

51.093 black

Hardware security



Hardware security

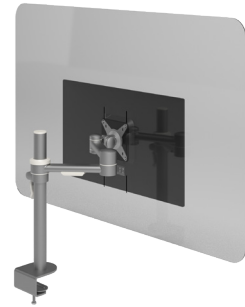
Addit hardware security protects your valuable hardware, reducing the chance of theft. Moreover, many insurance companies only compensate your losses from theft if your stolen equipment was appropriately secured.



Addit laptop security drawer 62

- Drawer for laptops and tablets
- Lockable
- Cable management via back of drawer

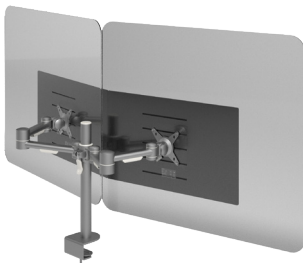
20.622 silver



Addit hygiene screen 31

- Protection screen (1017 x 677 mm)
- Attaches to VESA mounts
- Offers more protection within the workspace

44.310 clear acrylic



Addit dual monitor hygiene screen - monitor 32

- Protection screen (1600 x 677 mm total surface)
- Attaches to VESA mounts
- Offers more protection within the workspace
- For dual screen set-ups

44.320 clear acrylic

addit^x

Cable management

Loose cables. They're ugly, distracting and dangerous. But our cable management solutions don't just make your office look smart. Your workspace also becomes easier to clean and your IT systems easier to manage.



Addit cable guide 82 cm – desk 45

- 100% recycled PP (Polypropylene)
- Length: 825 mm (32,5"), fits desks up to 820 mm (32,3")
- Adjustable by adding/removing elements
- Suitable for 18 x cables up to 7mm (0,3") thick

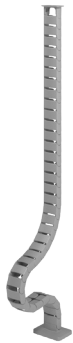
34.450 white (RAL9016)
34.452 grey (RAL9006)
34.453 black (RAL9005)



Addit cable guide sit-stand 130 cm set – desk 46

- Magnet mount included
- 100% recycled PP (Polypropylene)
- Length: 1340 mm (52,8"), fits desks up to 1300 mm (50,0")
- Suitable for 18 x cables up to 7mm (0,3") thick

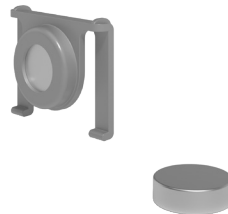
34.460 white (RAL9016)
34.462 grey (RAL9006)
34.463 black (RAL9005)



Addit cable guide sit-stand 130 cm – desk 47

- 100% recycled PP (Polypropylene)
- Length: 1340 mm (52,8"), fits desks up to 1300 mm (50,0")
- Adjustable by adding/removing elements
- Suitable for 18 x cables up to 7mm (0,3") thick

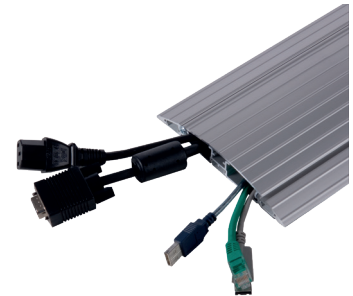
34.470 white (RAL9016)
34.472 grey (RAL9006)
34.473 black (RAL9005)



Addit cable guide – magnet mount 48

- 100% recycled PP (Polypropylene)
- Hassle-free mounting set for Addit cable guide
- Improves cable worm guidance
- Clicks on to any metal element at any height

34.480 white (RAL9016)
34.482 grey (RAL9006)
34.483 black (RAL9005)



Addit cable protector 60 cm - straight 40

- Aluminium cable guide and protector
- Suitable for 10 cables of 7 mm (0,3") thickness
- Easy top access
- Length: 600 mm (23,6")

31.402 silver

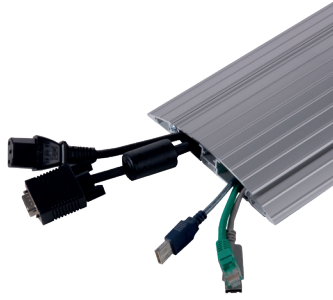
Cable management



Addit cable protector 90 cm - straight 41

- Aluminium cable guide and protector
- Suitable for 10 cables of 7 mm (0,3") thickness
- Easy top access
- Length: 900 mm (35,4")

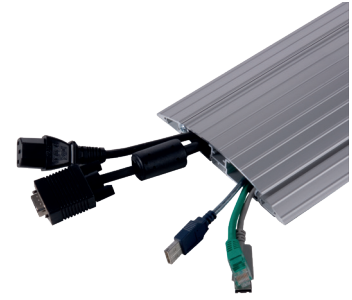
31.412 silver



Addit cable protector 150 cm - straight 42

- Aluminium cable guide and protector
- Suitable for 10 cables of 7 mm (0,3") thickness
- Easy top access
- Length: 1500 mm (59,1")

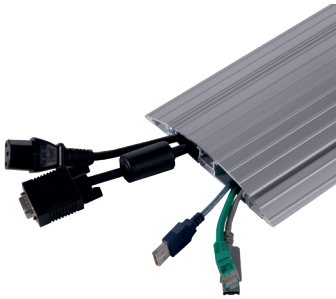
31.422 silver



Addit cable protector 180 cm - straight 43

- Aluminium cable guide and protector
- Suitable for 10 cables of 7 mm (0,3") thickness
- Easy top access
- Length: 1800 mm (70,9")

31.432 silver



Addit cable protector 118 cm - straight 45

- Aluminium cable guide and protector
- Suitable for 10 cables of 7 mm (0,3") thickness
- Easy top access
- Length: 1180 mm (46,5")

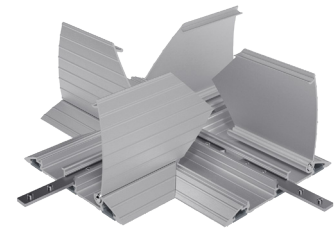
31.452 silver



Addit cable protector - T-connection 46

- Aluminium cable guide and protector
- Suitable for 10 cables of 7 mm (0,3") thickness
- Easy top access
- T connection

31.462 silver



Addit cable protector - cross-connection 47

- Aluminium cable guide and protector
- Suitable for 10 cables of 7 mm (0,3") thickness
- Easy top access
- Cross connection

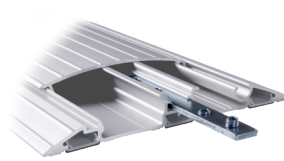
31.472 silver

addit^x

Addit cable protector - corner-connection 48

- Aluminium cable guide and protector
- Suitable for 10 cables of 7 mm (0,3") thickness
- Easy top access
- 90° corner piece

31.482 silver



Addit cable protector - connector 49

- Cable protector connector
- Allen key included
- Easy assembly

31.492 silver



Addit cable cover 150 cm - straight 15

- Synthetic cable guide and protector
- Suitable for 6 cables of 7 mm (0,3") thickness
- Bottom access

31.150 grey
31.153 black

Addit cable cover 300 cm - straight 30

- Synthetic cable guide and protector
- Suitable for 6 cables of 7 mm (0,3") thickness
- Bottom access

31.300 grey
31.303 black

Addit cable eater ø15 mm/3 m & hand tool 73

- Bundles and protects cables
- Quick and easy, hand tool included
- Suitable for 3 cables of 7 mm (0,3") thickness

33.731 white
33.732 silver
33.733 black

Addit cable eater ø25 mm/3 m & hand tool 78

- Bundles and protects cables
- Quick and easy, hand tool included
- Suitable for 6 cables of 7 mm (0,3") thickness

33.781 white
33.782 silver
33.783 black

Cable management



Addit cable eater ø15 mm/25 m 71

- Bundles and protects cables
- Quick and easy, hand tool not included
- Suitable for 3 cables of 7 mm (0,3") thickness

33.711 white
33.712 silver
33.713 black



Addit cable eater ø25 mm/20 m 76

- Bundles and protects cables
- Quick and easy, hand tool not included
- Suitable for 6 cables of 7 mm (0,3") thickness

33.761 white
33.762 silver
33.763 black



Addit cable eater ø15 mm - hand tool 82

- Hand tool for guiding cables
- Suitable for ø15 mm (0,6") cable eaters

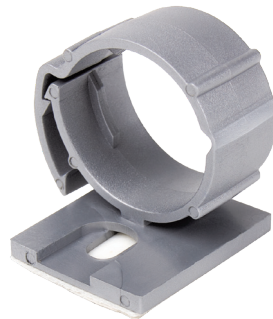
33.820 orange



Addit cable eater ø25 mm - hand tool 86

- Hand tool for guiding cables
- Suitable for ø25 mm (1,0") cable eaters

33.860 orange



Addit cable eater ø15/25 mm - mounting clips 90

- Mounting clips for all cable eaters
- Screw or stick into place

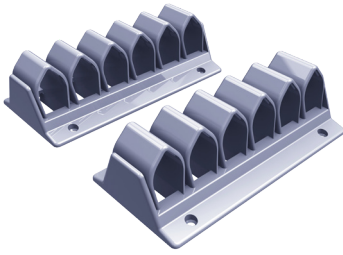
33.902 silver
33.903 black



Addit cable spiral 25

- Bundles and protects cables
- Wraps around cables
- Suitable for 5 cables of 7 mm (0,3") thickness

33.250 white
33.252 silver
33.253 black

addit^x

Addit cable wave 30

- Horizontally guides cables
- Suitable for 10 cables of 7 mm (0,3") thickness
- Mounts underneath desktop

34.300 white
34.302 silver
34.303 black



Addit cable loop ties 00

- Bundles cables
- Easy Velcro fastening
- Suitable for 64 cables of 7 mm (0,3") thickness

33.000 white
33.001 grey
33.003 black

Our products

Dfx nr.	Colour
20.622	silver
31.150	grey
31.153	black
31.300	grey
31.303	black
31.402	silver
31.412	silver
31.422	silver
31.432	silver
31.452	silver
31.462	silver
31.472	silver
31.482	silver
31.492	silver
32.182	silver
32.183	black
32.202	silver
32.203	black
32.302	silver
32.303	black
32.309	red
32.310	white
32.312	silver
32.313	black
32.322	silver
32.323	black
32.362	silver
33.000	white
33.001	grey
33.003	black
33.250	white
33.252	silver
33.253	black
33.711	white
33.712	silver
33.713	black
33.731	white
33.732	silver
33.733	black
33.761	white
33.762	silver
33.763	black
33.781	white
33.782	silver
33.783	black
33.820	orange
33.860	orange
33.902	silver
33.903	black
34.300	white
34.302	silver
34.303	black
34.450	white
34.452	grey
34.453	black
34.460	white
34.462	grey
34.463	black
34.470	white
34.472	grey
34.473	black
34.480	white
34.482	grey
34.483	black
35.100	white
35.103	black
35.200	white

Dfx nr.	Colour
35.203	black
44.100	clear acrylic
44.310	clear acrylic
44.320	clear acrylic
44.410	clear acrylic
44.550	clear acrylic
44.660	clear acrylic
44.900	clear acrylic
45.110	white
45.113	black
45.120	white
45.123	black
45.220	white
45.223	black
45.900	white
45.903	black
48.004	grey
48.120	white
48.122	silver
48.123	black
48.130	white
48.132	silver
48.133	black
48.903	black
49.400	clear acrylic
49.401	matt acrylic
49.410	clear acrylic
49.411	matt acrylic
49.440	clear acrylic
49.450	clear acrylic
49.550	clear acrylic
49.570	clear acrylic
51.093	black
51.388	silver
51.582	silver
51.592	silver
52.032	silver
52.042	silver
52.052	silver
52.112	silver
52.132	silver
52.142	silver
52.152	silver
52.170	white
52.180	white
52.190	white
52.422	silver
52.432	silver
52.500	white
52.502	silver
52.503	black
52.562	silver
52.572	silver
52.582	silver
52.602	silver
52.603	black
52.622	silver
52.632	silver
52.642	silver
52.643	black
52.652	silver
52.662	silver
52.672	silver
52.682	silver
52.702	silver
52.712	silver
52.722	silver

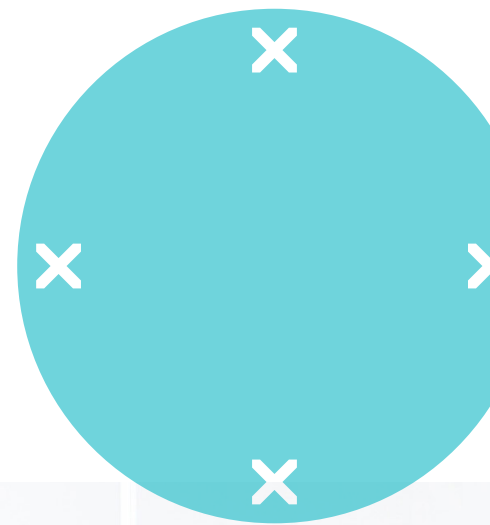
Dfx nr.	Colour
52.732	silver
52.832	silver
52.852	silver
52.862	silver
52.912	silver
52.962	silver
52.972	silver
52.982	silver
52.990	white
52.993	black
54.352	silver
54.362	silver
58.010	white
58.020	white
58.040	white
58.043	black
58.050	white
58.053	black
58.100	white
58.102	silver
58.103	black
58.120	white
58.122	silver
58.123	black
58.140	white
58.142	silver
58.143	black
58.202	silver
58.222	silver
58.312	silver
58.402	silver
58.422	silver
58.512	silver
58.600	white
58.602	silver
58.603	black
58.620	white
58.622	silver
58.623	black
58.650	white
58.652	silver
58.653	black
58.702	silver
58.712	silver
58.750	white
58.760	white
58.770	white
65.110	white
65.113	black
65.210	white
65.213	black
65.810	white
65.813	black
65.820	white
65.823	black
65.910	white
65.913	black
65.920	white
65.923	black
65.930	white
65.933	black
65.940	white
65.943	black
96.513	black
97.223	black
97.402	silver

Need something special?

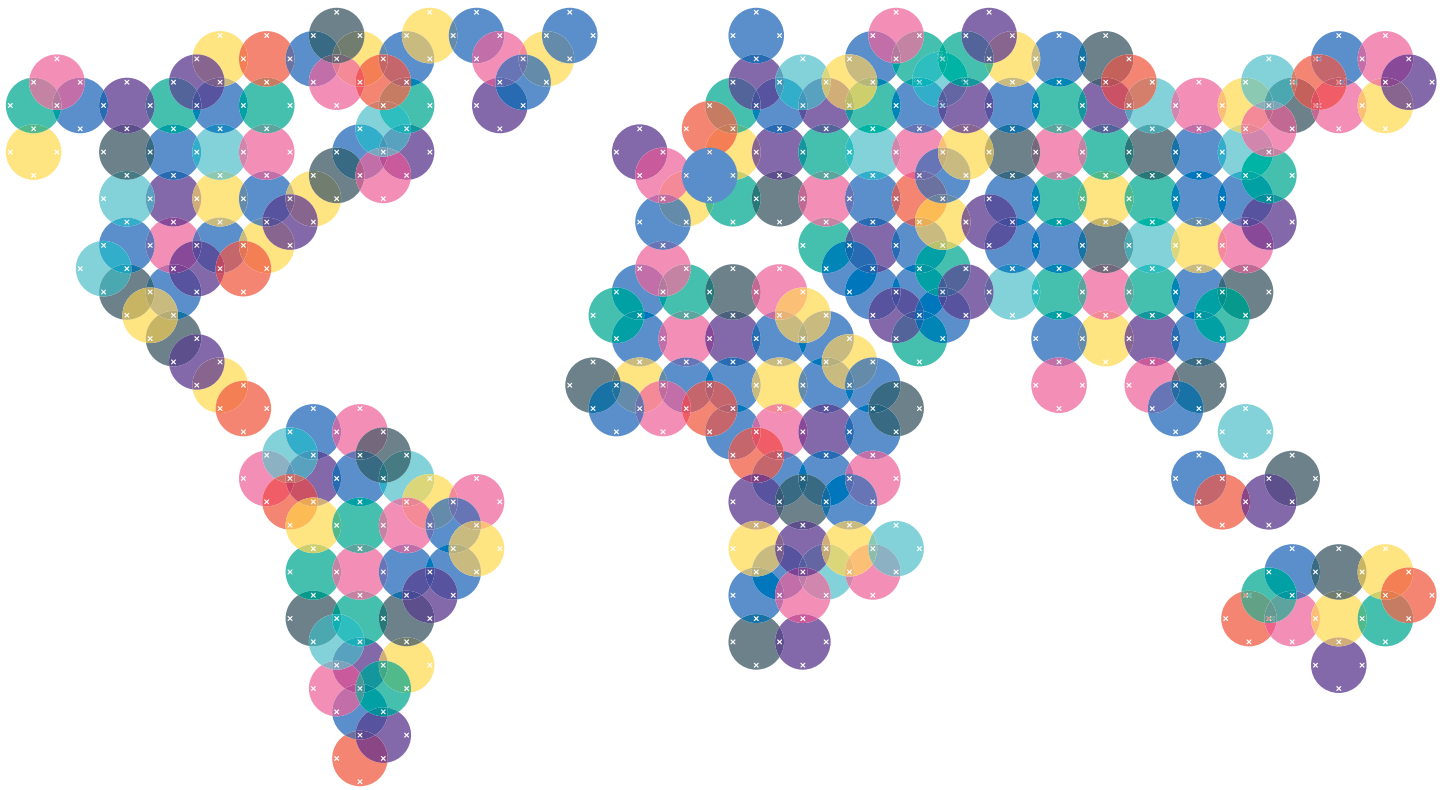
We develop tailor-made solutions to meet your unique requirements.

From adding company colours, to adapting a product to your particular mounting requirements, to developing your new product from scratch.

Over the decades we've developed literally 1000s of different OEM and ODM specials. And whether we're modifying an existing product for you or developing a new one in partnership with you, our designers all share our collaborative approach. Working with you to find a solution that will not only meet the spec but hopefully exceed your expectations.



We are international



COR-211028-CAT-EN-EUR

Dataflex International BV
Global
T +31 180 515444
info@dataflex-int.com

Dataflex Deutschland GmbH
Germany & Austria
T +49 211 17607610
info@dataflex.de

Dataflex France Sarl
France
T +33 134 753738
info@dataflex.fr

Dataflex UK Ltd
United Kingdom & Ireland
T +44 800 0305045
info@dataflex-uk.co.uk

Dataflex Benelux BV
Benelux
T +31 180 530750
info@dataflex.nl

Dataflex Italia Srl
Italy
T +39 346 2233225
info@dataflexitalia.com

dataflex

feeling at work